

MUNICIPIO DE MAZATLAN  
CALLE ANGEL FLORES S/N COLONIA CENTRO MAZATLAN SINALOYA

PRESIDENTE MUNICIPAL  
LIC. EDGAR AUGUSTO GONZÁLEZ ZATARAIN

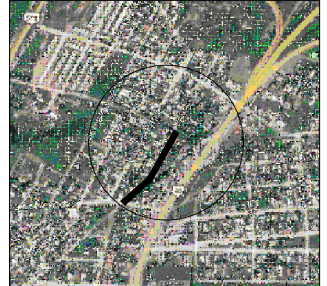
DIRECTOR DE OBRAS PUBLICAS  
ING. RIGOBERTO ARAMBURO BOJORQUEZ

SUBDIRECTOR DE OBRAS PUBLICAS  
ING. MARTIN GALLARDO NORIEGA

JEFE DEL DEPTO. DE PROYECTO Y TOPOGRAFIA  
ING. JUAN CARLOS GALARZA BARRON

INTEGRANTES DEL DEPARTAMENTO DE PROYECTOS:  
ARQ. JESUS IVAN MORENO JIMENEZ  
ARQ. ANA GABRIELA OSUNA RENDON  
ARQ. PALOMA BERENICE MANZANO LOPEZ  
ARQ. MARTIN LOANZA NORIEGA

PROYECTO:  
**PAVIMENTACIÓN DE CALLE INOCENCIA VALDEZ**  
ENTRE CALLE SIERRA DE VENADOS Y CALLE HORTENSIA MORENO  
POBLADO VILLA UNION



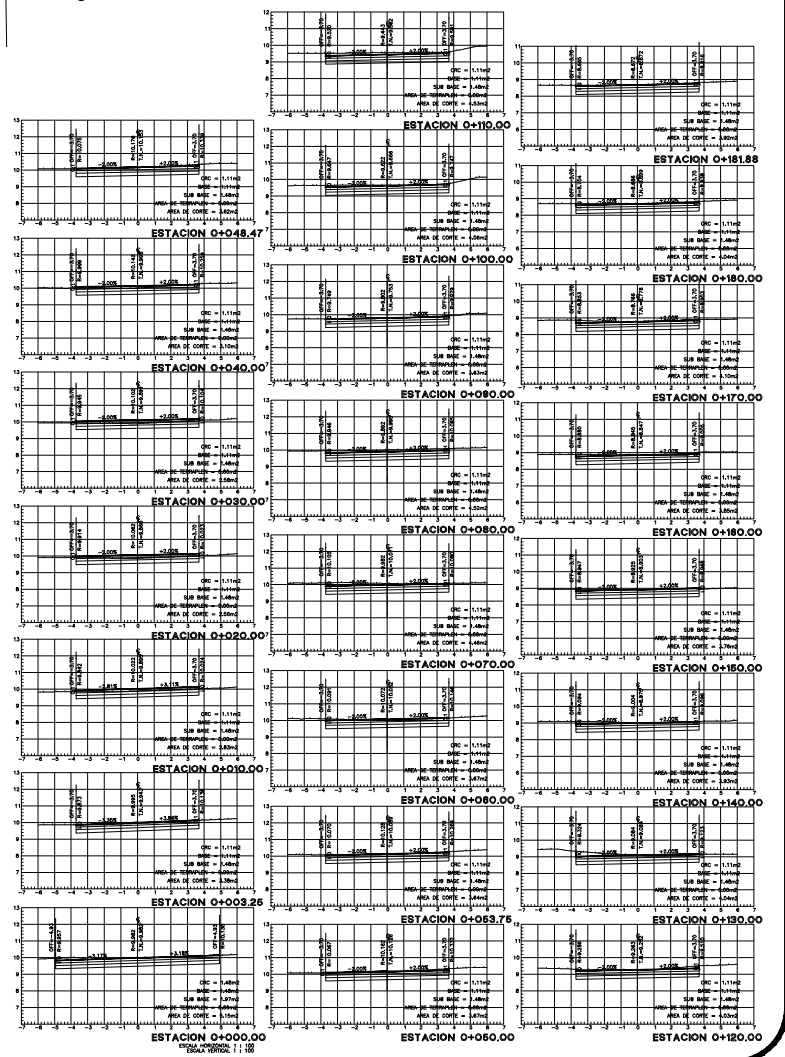
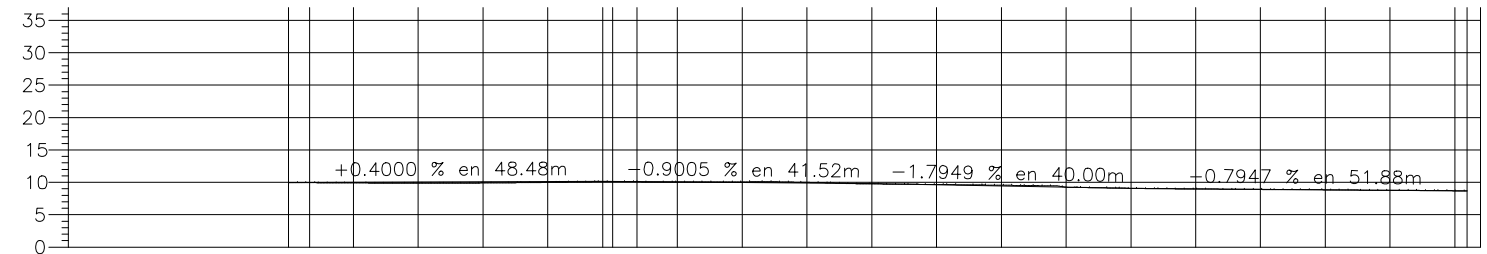
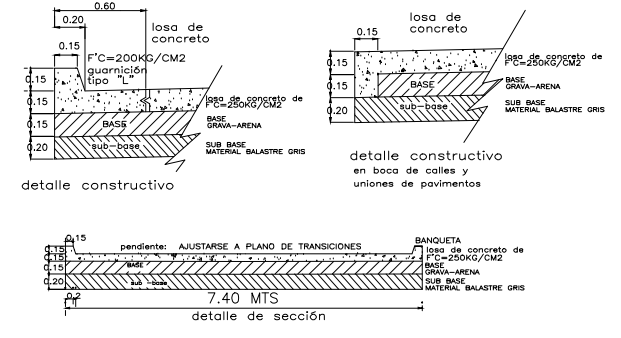
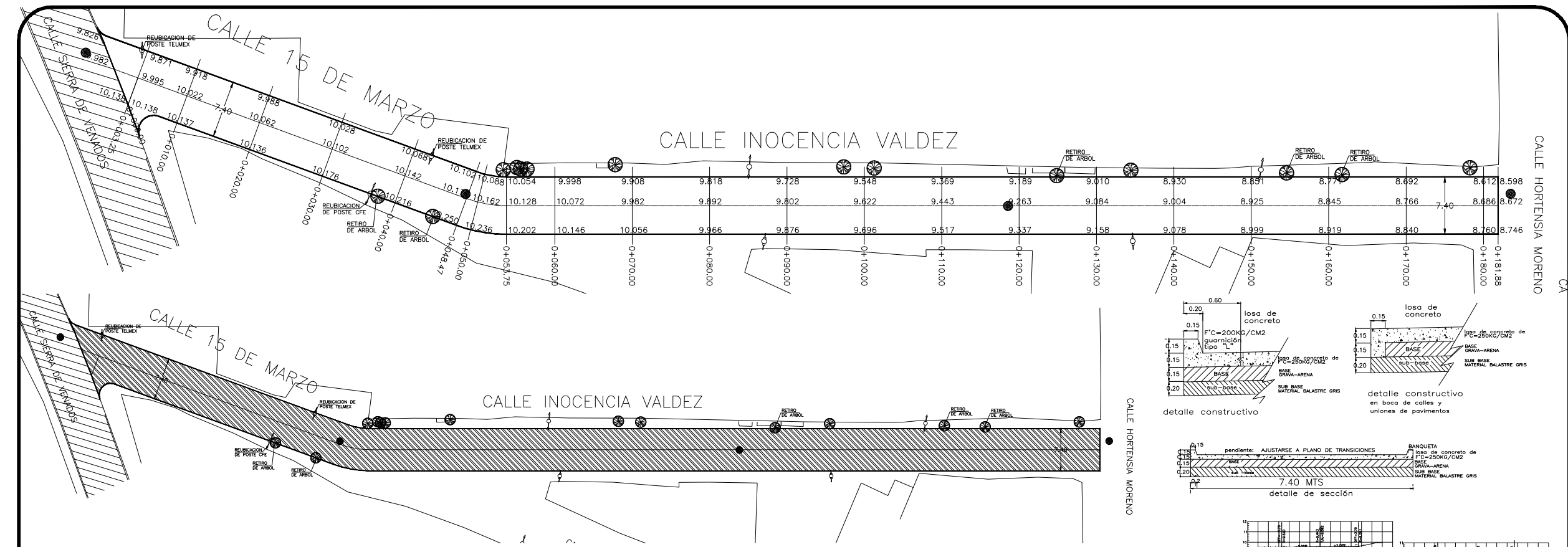
LOCALIZACION  
NORTE

ESCALA: S/E  
LAMINA No. 1

FECHA:  
JULIO 2023

DISÑO - DIBUJO:  
ARQ. PALOMA BERENICE MANZANO LOPEZ

OBRAS PUBLICAS



ESTACION	VOLUMEN		ESPESOR		ELEVACION	
	TERRAPLEN	CORTE	TERRAPLEN	CORTE	SUBRASANTE	TERRENO
0+000.00	0.00	0.00	0.00	0.00	9.482	9.982
0+010.00	0.00	0.00	0.00	0.00	9.495	9.943
0+020.00	0.00	0.00	0.00	0.00	9.522	9.895
0+030.00	0.00	0.00	0.00	0.00	9.562	9.860
0+040.00	0.00	0.00	0.00	0.00	9.602	9.891
0+050.00	0.00	0.00	0.00	0.00	9.642	9.998
0+060.00	0.00	0.00	0.00	0.00	9.676	10.132
0+070.00	0.00	0.00	0.00	0.00	9.662	10.126
0+080.00	0.00	0.00	0.00	0.00	9.628	10.089
0+090.00	0.00	0.00	0.00	0.00	9.572	10.052
0+100.00	0.00	0.00	0.00	0.00	9.482	10.071
0+110.00	0.00	0.00	0.00	0.00	9.392	9.995
0+120.00	0.00	0.00	0.00	0.00	9.302	9.753
0+130.00	0.00	0.00	0.00	0.00	9.122	9.666
0+140.00	0.00	0.00	0.00	0.00	8.943	9.562
0+150.00	0.00	0.00	0.00	0.00	8.763	9.252
0+160.00	0.00	0.00	0.00	0.00	8.584	9.084
0+170.00	0.00	0.00	0.00	0.00	8.504	8.975
0+180.00	0.00	0.00	0.00	0.00	8.425	8.903
0+181.88	0.00	0.00	0.00	0.00	8.345	8.847
TOTAL	0.00	40.68	0.51	40.68	8.186	8.692

**PERFIL CALLE INOCENCIA VALDEZ**  
ESCALA HORIZONTAL 1 : 1000  
ESCALA VERTICAL 1 : 1000  
TOTAL VOLUMEN CORTE = 681.50m<sup>3</sup>  
TOTAL VOLUMEN TERRAPLEN = 0.00m<sup>3</sup>