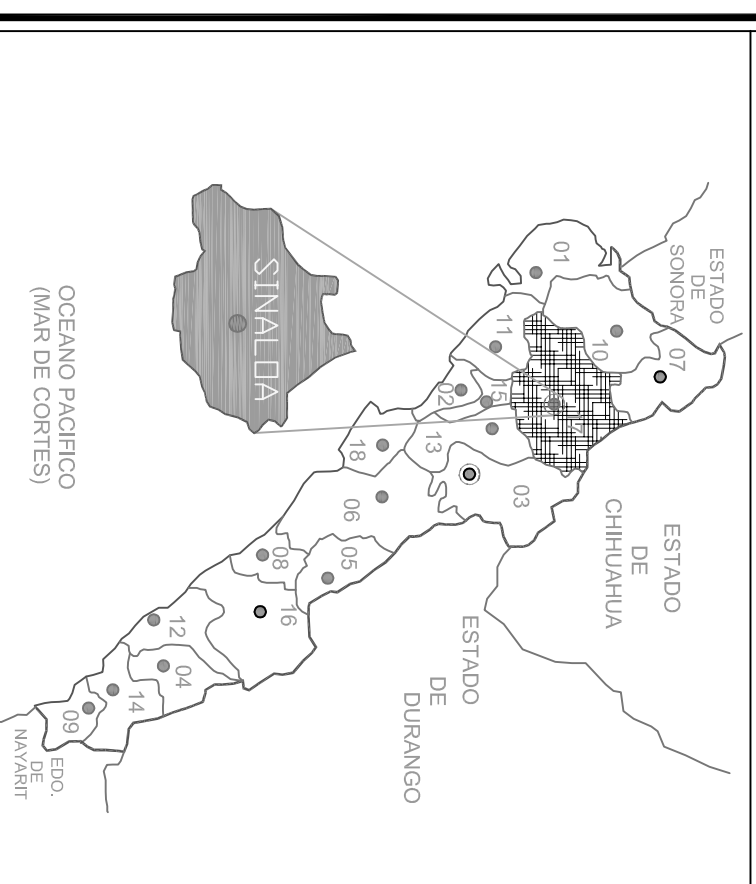
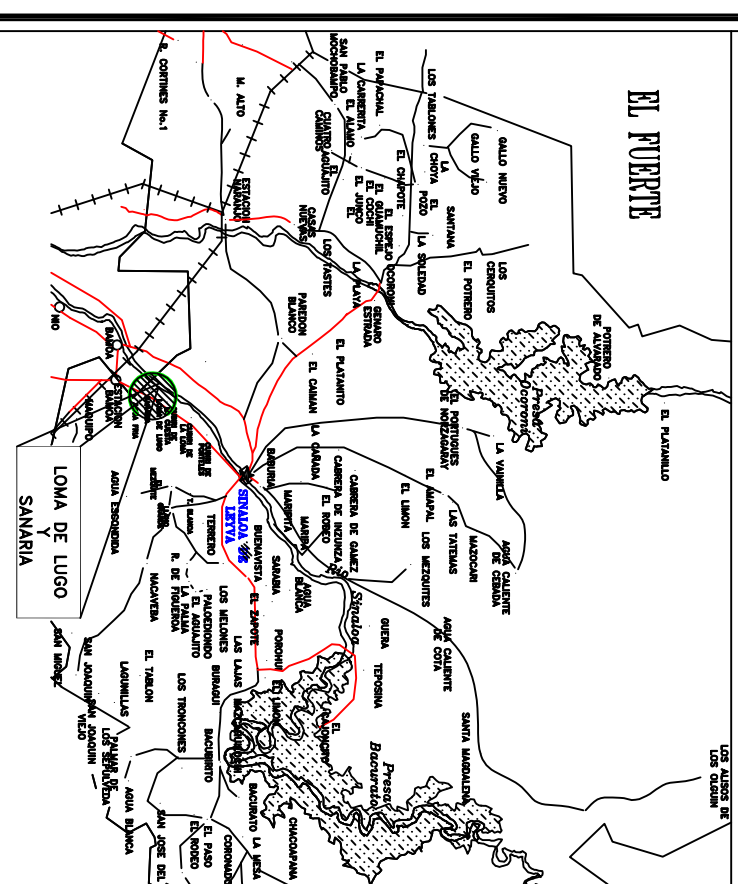


Macrolocalización



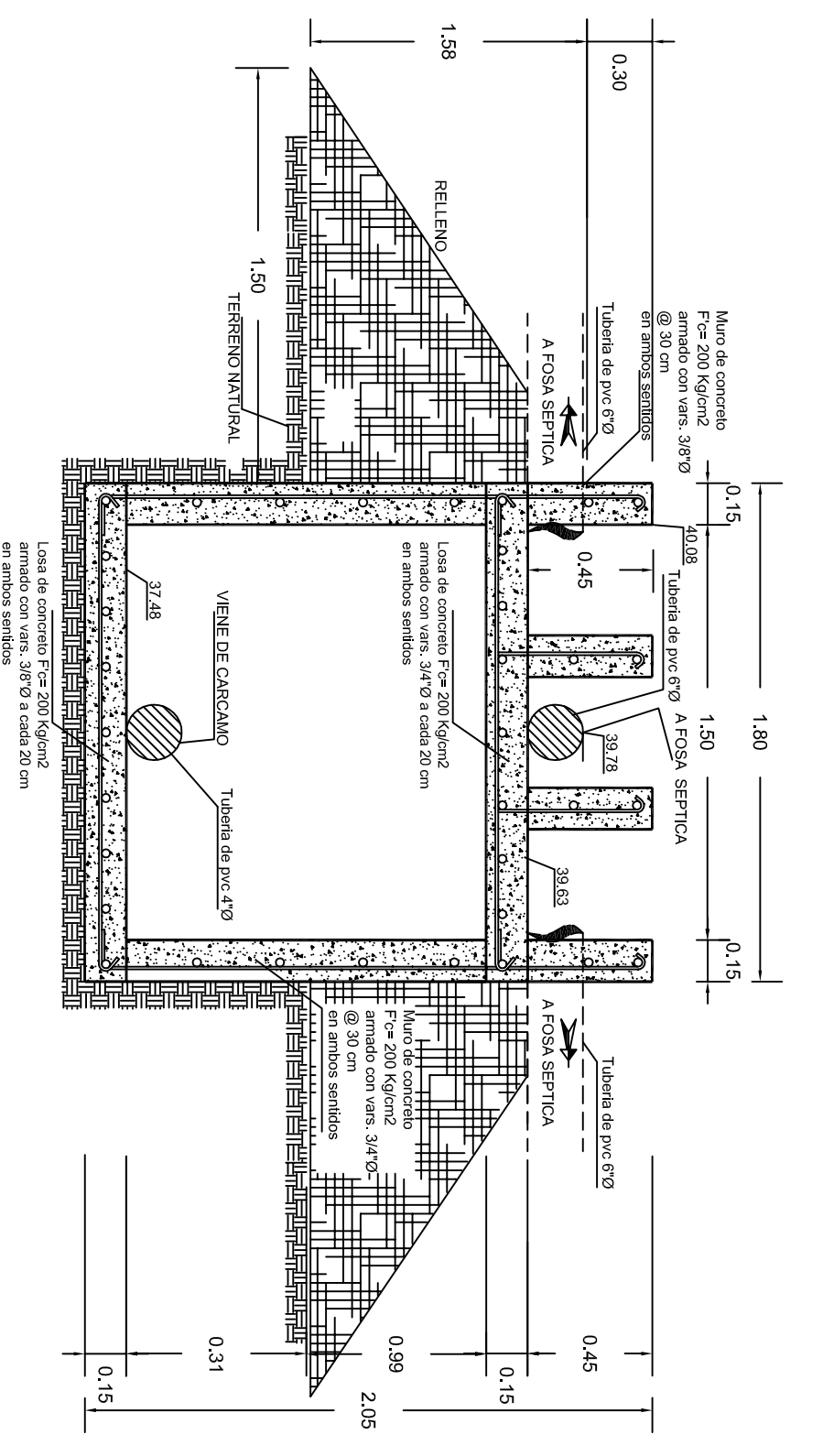
Microlocalización



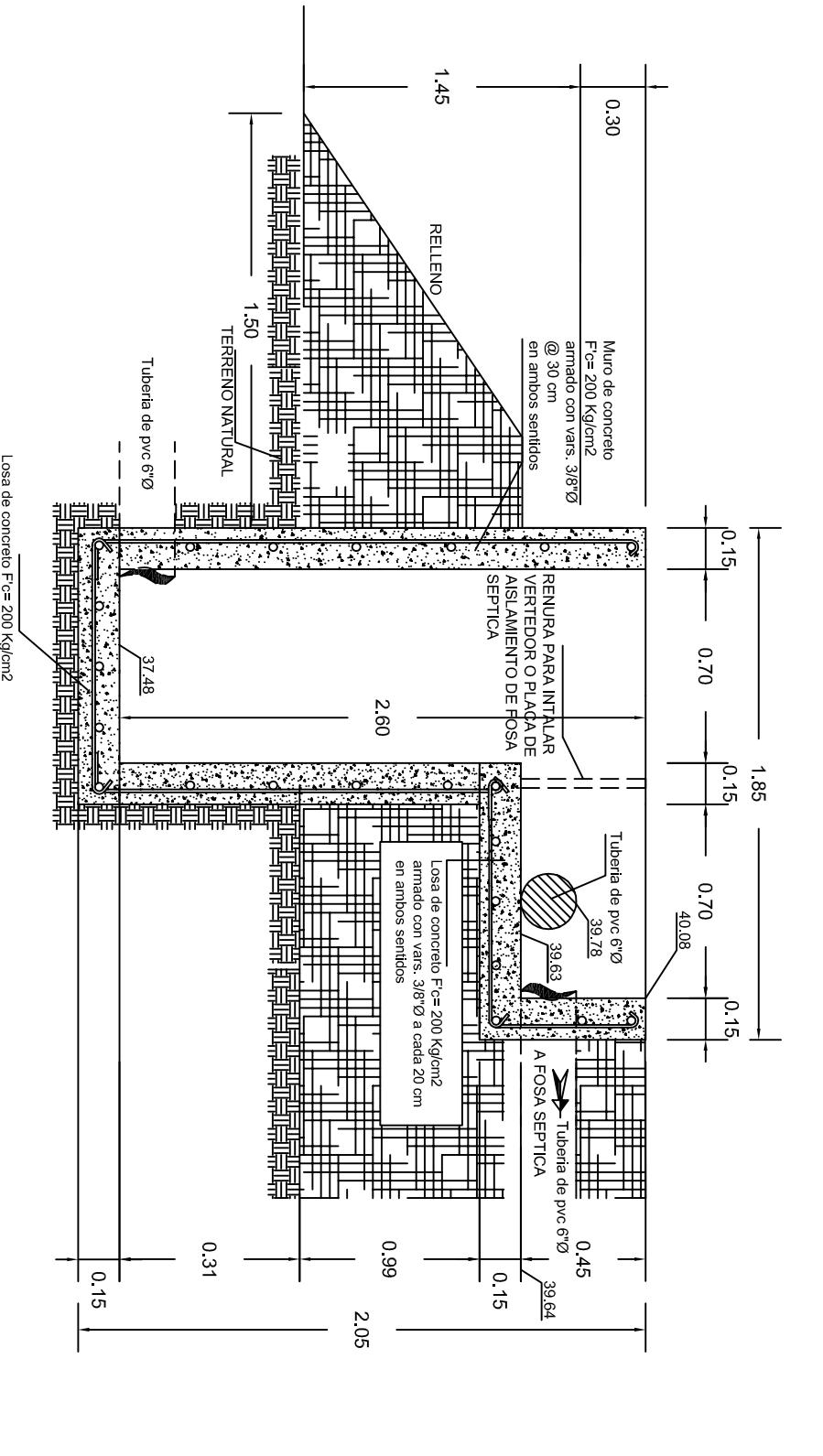
H. AYUNTAMIENTO DE SINALOA

JUNTA MUNICIPAL DE AGUA POTABLE Y ALCANTARILLADO DE SINALOA.

| | |
|----------------------|-------------------------------------|
| Gerente General | C. Guadalupe Castro Quiñonez |
| Presidenta Municipal | Lic. María Beatriz León Rabio |
| Gerente Técnico | Ing. Ricardo Sánchez León |
| Contenido | Cajas de Entrada y Salida (Wetland) |
| Localización | Municipio Sinaloa de Leyva |
| Localización | La Loma de Lugo - Sinaloa |
| Escala | LA INDICADA |
| No. de plano | 07 |
| Fecha | Enero 2021 |

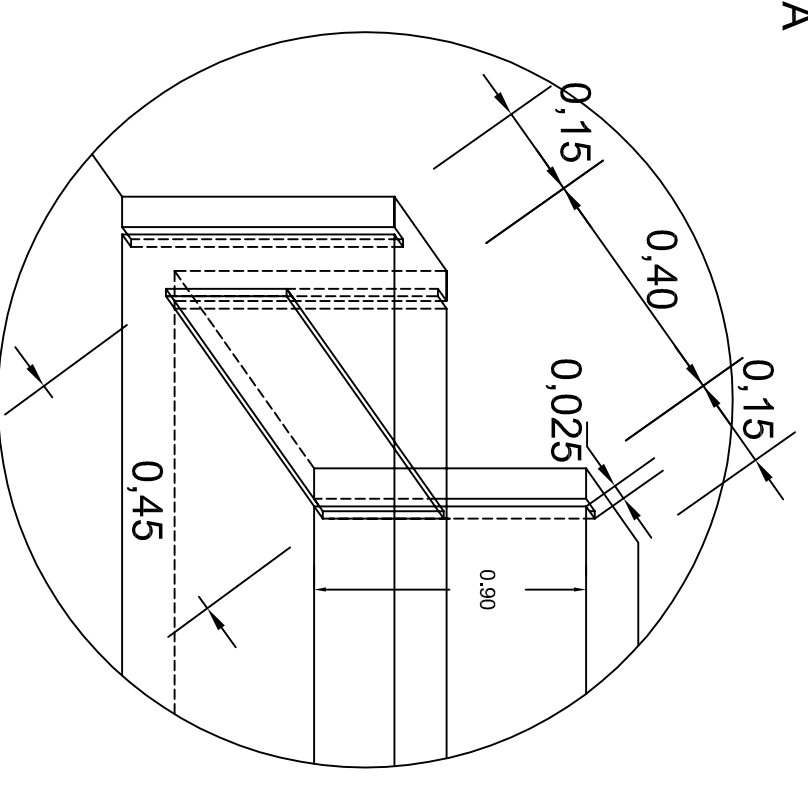
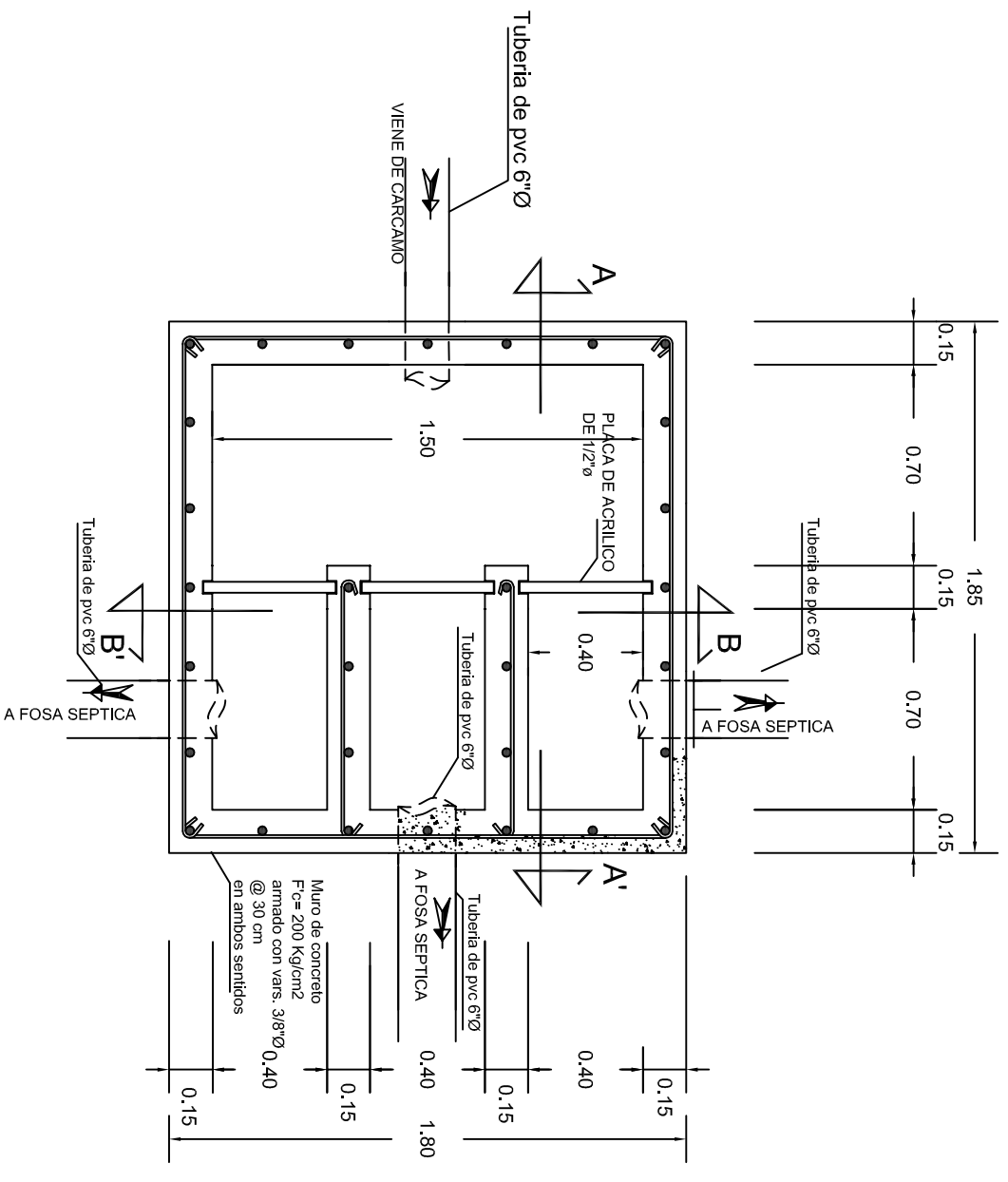


CORTE B-B: CAJA DE ENTRADA A FOSA SEPTICA

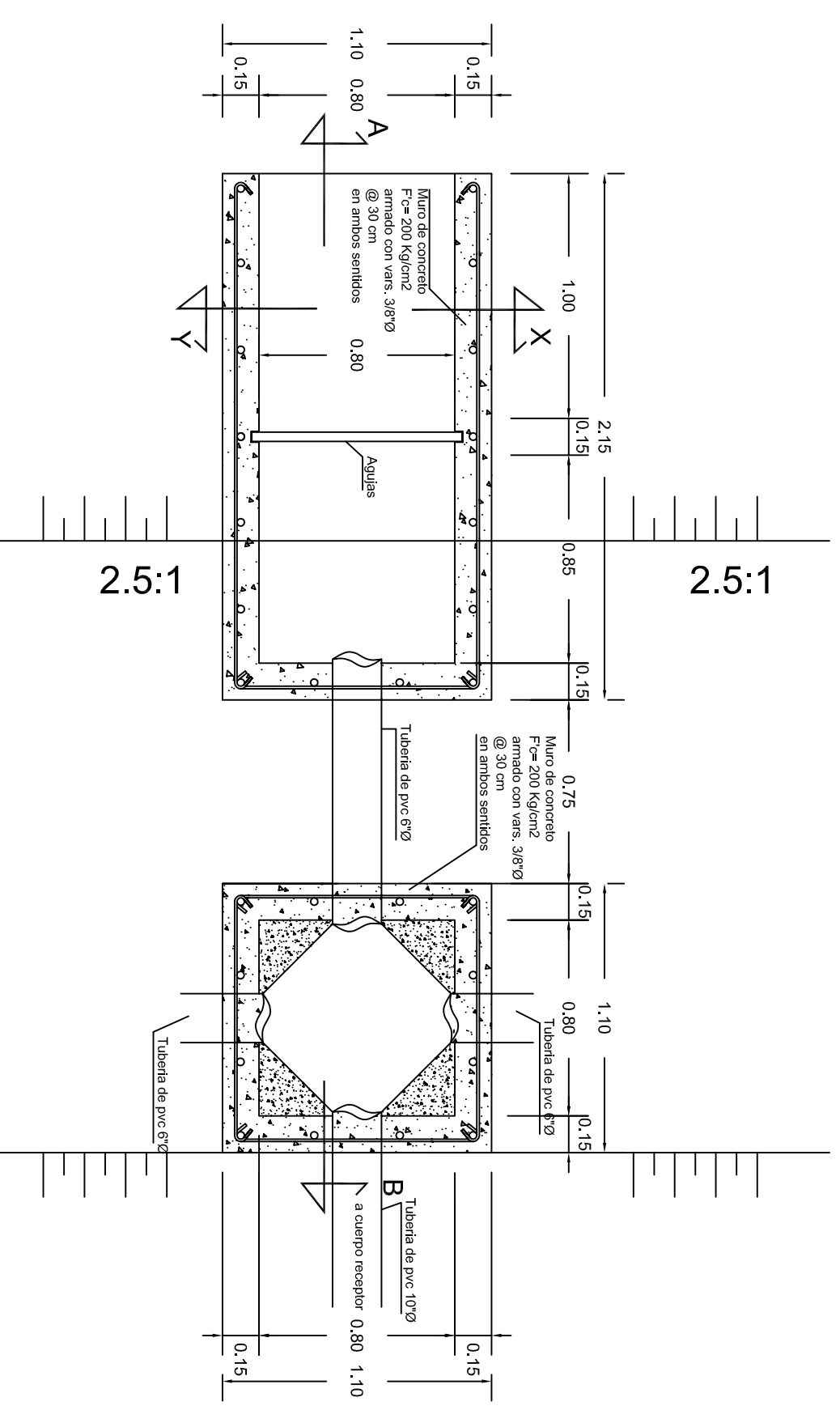


CORTE A-A: CAJA DE ENTRADA A FOSA SEPTICA

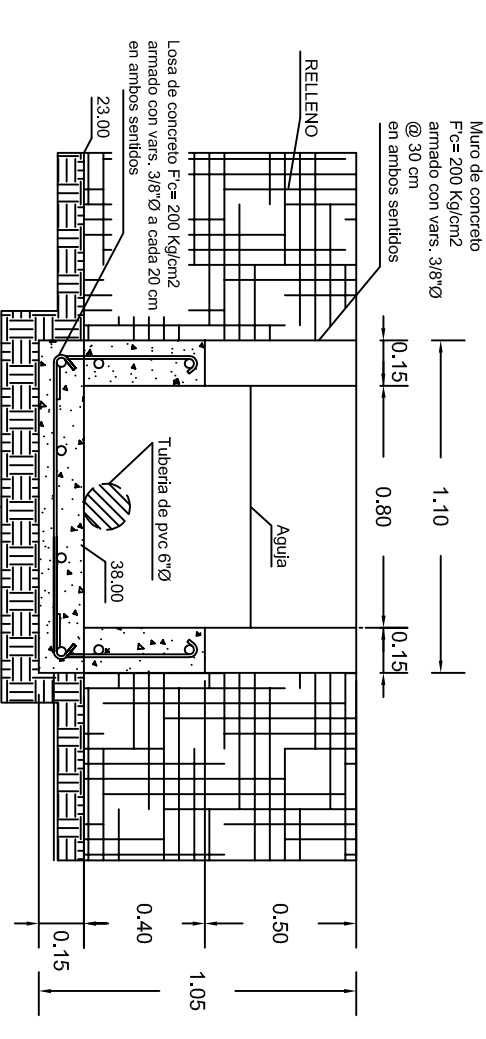
PLANTA CAJA DE ENTRADA A FOSA SEPTICA



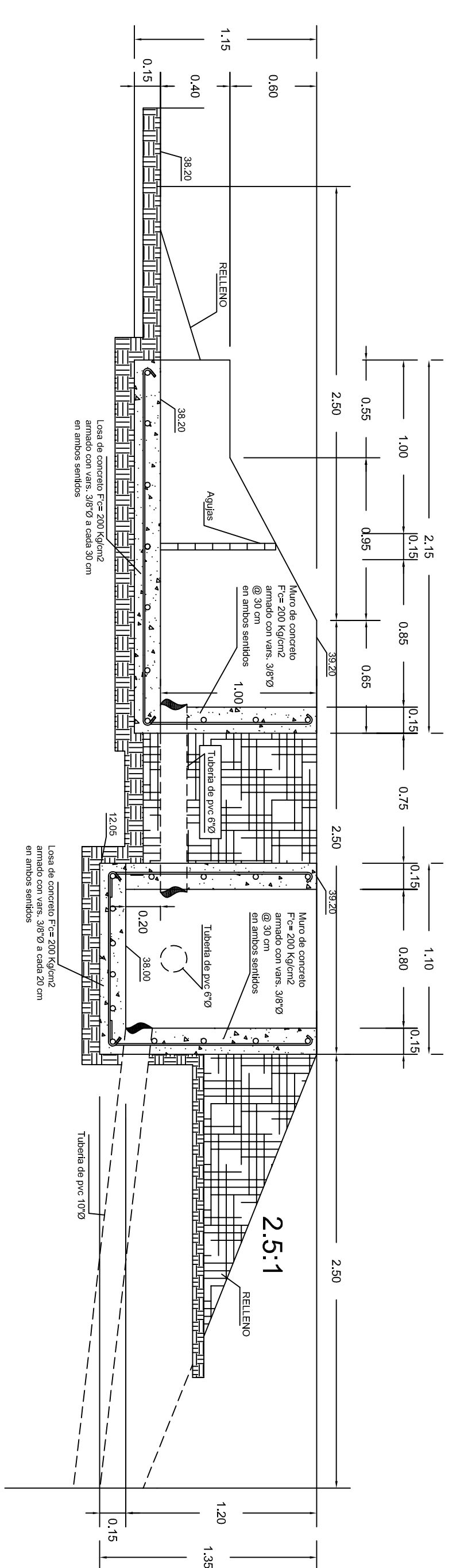
DETALLE DE PLACA EN VEREDOR



PLANTA CAJA DE SALIDA Y REGISTRO UNION



CORTE X-Y CAJA DE SALIDA Y REGISTRO UNION



CORTE A-B CAJA DE SALIDA Y REGISTRO UNION