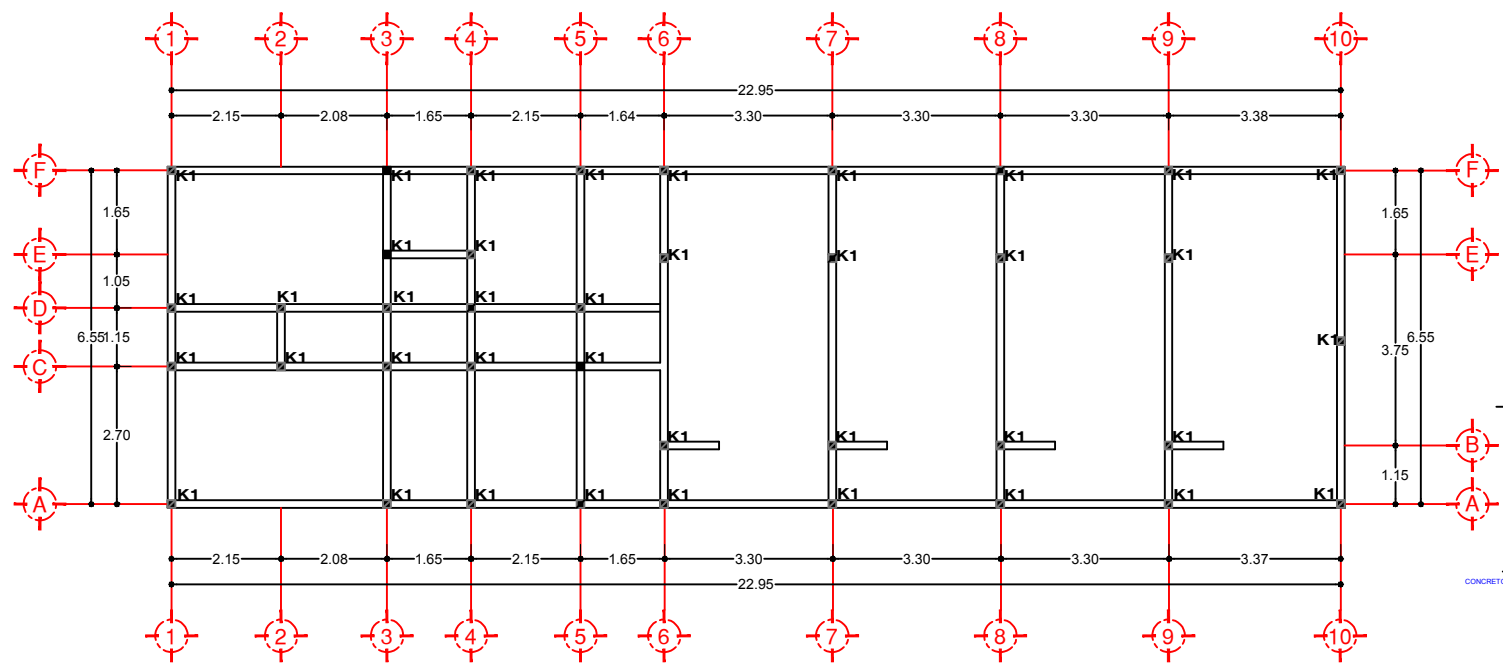
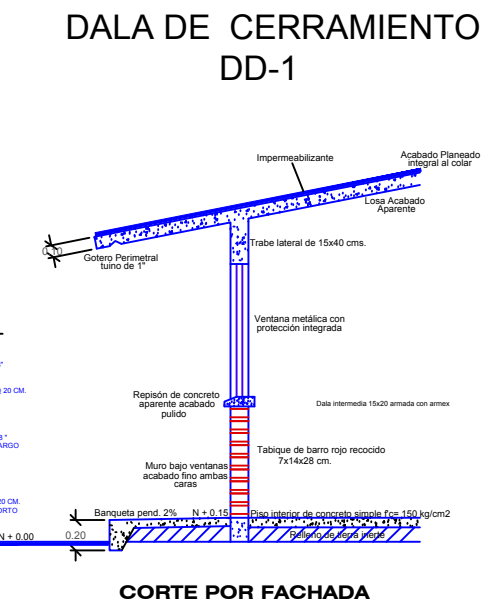
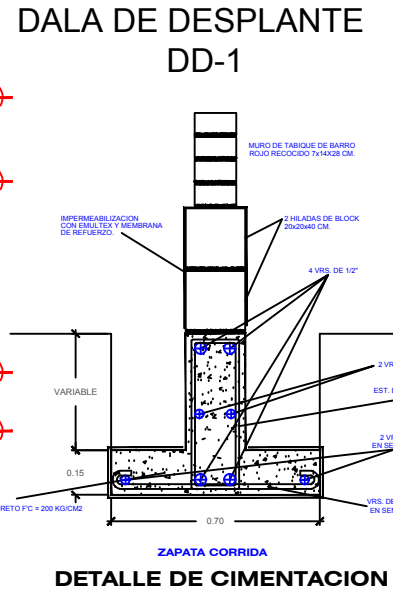
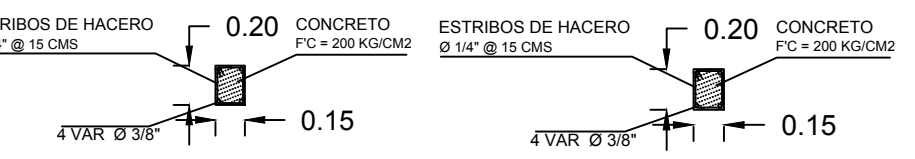
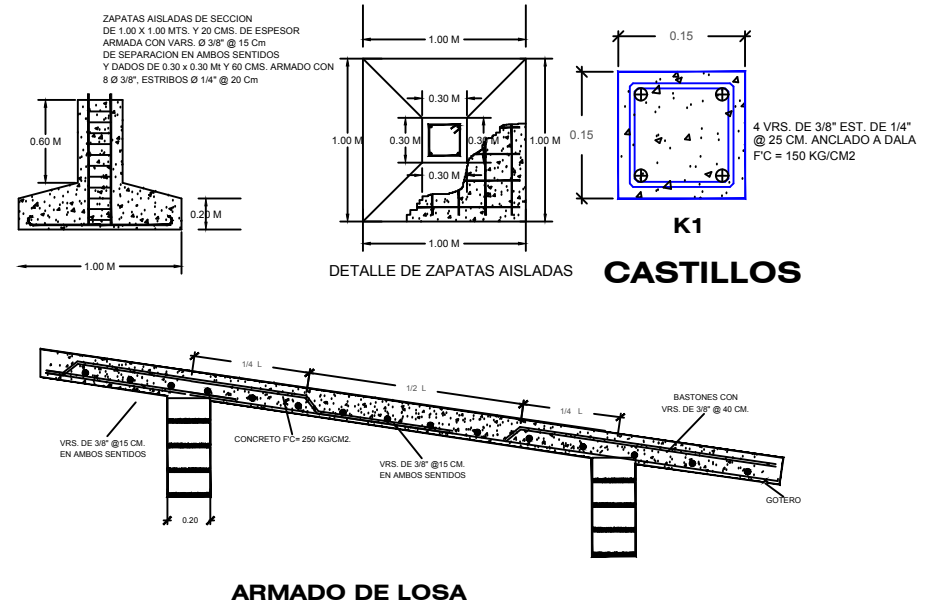




PLANTA ARQUITECTONICA DE CIMENTACION



PLANTA ARQUITECTONICA ESTRUCTURAL



H. AYUNTAMIENTO DE GUASAVE

DIRECCIÓN GENERAL DE OBRAS Y SERVICIOS PÚBLICOS

DIRECCIÓN DE PLANEACIÓN URBANA

PRESIDENTE MUNICIPAL:
LIC. MARIA AURELIA LEAL LOPEZ

DIRECTOR GENERAL DE OBRAS Y SERVICIOS PÚBLICOS:
ING. MAURICIO LOPEZ PARRA


DIRECTOR DE PLANEACIÓN URBANA:
ARQ. ERIKA KARINA PONCE FERNANDEZ


LEVANTÓ:
ING. UZZIEL ABRAHAM CASTRO ESCARREGA

DIBUJÓ:
ARQ. PALOMA SANCHEZ INZUNZA

FECHA:
ENERO/2020

ESCALA:
S/E

ORIENTACION:


LOCALIZACION:


CONTENIDO:
CONSTRUCCION DE BARANDILLA (SEGURIDAD PUBLICA)

LOCALIDAD:
GUASAVE, SINALOA.