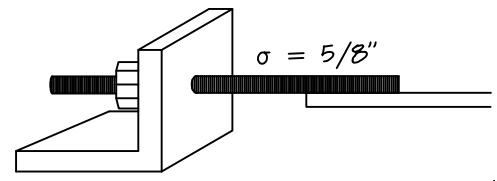
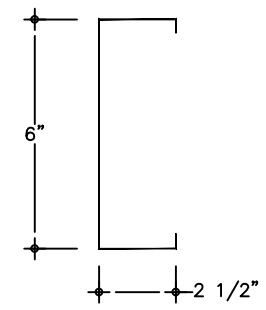


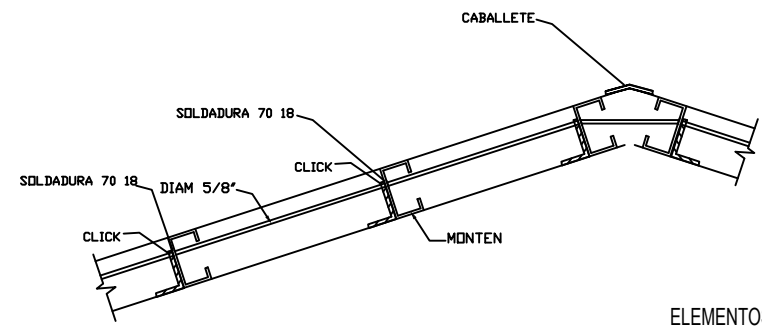
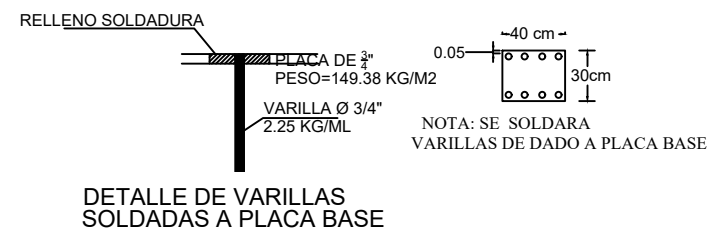
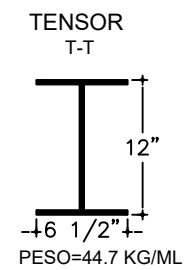
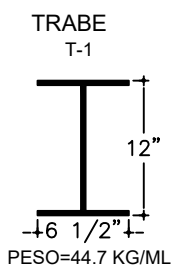
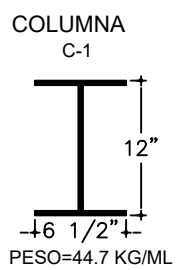
contraventeo



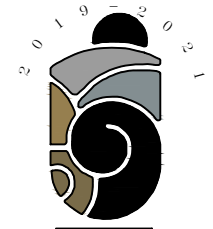
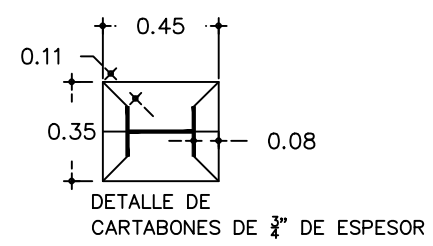
CLICK DE ANGULO 3" X 3" X 3/16" PESO=5.52 KG/ML
 DETALLE DE CONTRAFLAMBEOS
 con acero pl 5/8"
 montaje, primer pitura a dos manos



LARGUEROS
 PESO=4.46 KG/ML



ELEMENTOS ESTRUCTURALES METALICOS



MAZATLÁN
 HONORABLE GOBIERNO MUNICIPAL

PRESIDENTE MUNICIPAL
 QFB. LUIS GUILLERMO BENITEZ TORRES

DIRECTOR DE OBRAS PUBLICAS
 M.I. JUAN DE DIOS GARAY VELAZQUEZ

SUBDIRECTOR DE OBRAS PUBLICAS
 ARQ. CARLOS JESUS TAPIA CAMACHO

JEFE DEL DEPTO. DE PROYECTO Y TOPOGRAFIA
 ING. JUAN CARLOS GALARZA BARRON

INTEGRANTES DEL DEPARTAMENTO DE PROYECTOS:
 ING. CARLOS MANUEL TAPIA BARRON
 ARQ. PATRICIA ANAIZ CRISTINA
 ARQ. JESUS IVAN MORENO JIMENEZ

PROYECTO
 TECHUMBRE METALICA 18.50X32.20MTS
 ESC. P. VENUSTIANO CARRANZA
 SAN MARCOS



ESCALA: S/E
 LABORA No. 5

FECHA:
 AGOSTO DEL 2019

DISENO - DIBUJO:
 ARQ. JESUS IVAN MORENO JIMENEZ



MUNICIPIO DE MAZATLÁN
 CALLE JUAN PABLO RIVERA S/N COLONIA CENTRO MAZATLÁN, S.B.C.

OBRAS PUBLICAS