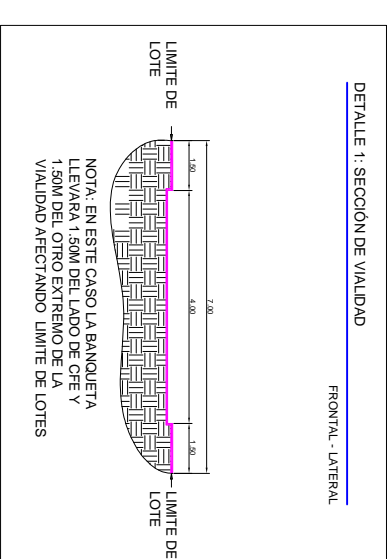
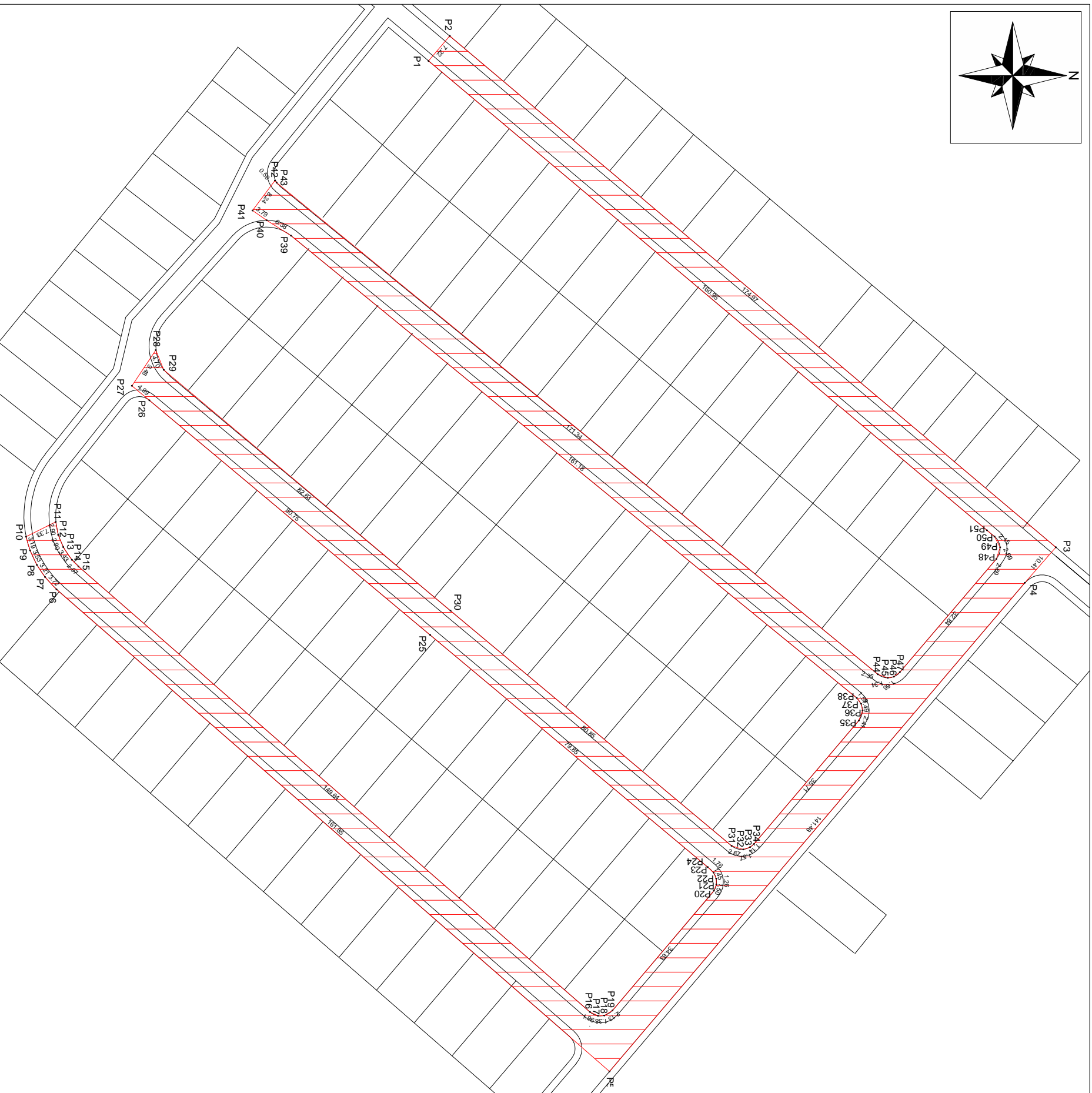
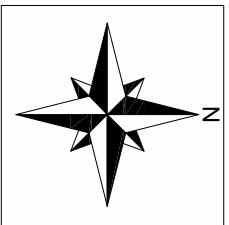


LOCALIDAD EL TAMARINDO

Localización: SINDICATURA DE VILLA A. LOPEZ MATEOS

SECTOR AMPLIACION GUADALUPE EN LA LOCALIDAD EL TAMARINDO,
SINDICATURA DE VILLA A. LOPEZ MATEOS, CULIACAN, SINALOA.



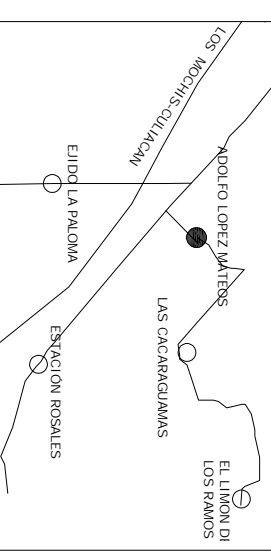
VERTICE	LADO	DIST	ANGULO	ESTE	NORTE
P1	P1 - P2	7.22	89°55'4"	233984.573	2756577.762
P2	P2 - P3	174.97	88°58'44"	233889.053	2756582.416
P3	P3 - P4	10.41	89°2'59"	233971.889	2756716.142
P4	P4 - P5	141.48	180°45'23"	233979.735	2756709.286
P5	P5 - P6	161.85	89°15'47"	234087.559	2756617.698
P6	P6 - P7	3.72	174°13'12"	233981.188	2756495.702
P7	P7 - P8	3.21	170°54'9"	233978.470	2756493.156
P8	P8 - P9	3.53	171°9'23"	233975.812	2756491.361
P9	P9 - P10	3.19	171°10'47"	233972.616	2756489.857
P10	P10 - P11	7.33	99°59'51"	233969.556	2756488.956
P11	P11 - P12	2.90	74°28'38"	233966.299	2756495.528
P12	P12 - P13	2.90	191°12'51"	233969.150	2756496.074
P13	P13 - P14	3.43	192°13'40"	233971.839	2756497.164
P14	P14 - P15	2.07	190°37'38"	233974.669	2756499.094
P15	P15 - P16	148.64	184°0'20"	233976.139	2756615.354
P16	P16 - P17	1.38	207°36'44"	234075.291	2756615.134
P17	P17 - P18	1.38	207°36'44"	234075.291	2756615.134
P18	P18 - P19	2.13	209°5'33"	234075.223	2756616.510
P19	P19 - P20	34.63	197°47'31"	234074.096	2756618.321
P20	P20 - P21	1.50	199°17'10"	234074.687	2756619.729
P21	P21 - P22	1.26	202°46'55"	234066.284	2756641.288
P22	P22 - P23	1.45	202°18'24"	234065.023	2756641.230
P23	P23 - P24	1.76	202°35'8"	234063.702	2756640.640
P24	P24 - P25	79.85	183°28'39"	234042.496	2756639.363
P25	P25 - P26	80.75	180°0'0"	233991.266	2756578.112
P26	P26 - P27	4.99	180°9'32"	233989.457	2756516.171
P27	P27 - P28	9.48	95°59'48"	233986.286	2756512.333
P28	P28 - P29	4.70	55°40'3"	233978.387	2756517.598
P29	P29 - P30	82.63	208°2'42"	233972.743	2756519.351
P30	P30 - P31	80.85	180°7'55"	233985.906	2756582.614
P31	P31 - P32	2.67	202°23'18"	234037.775	2756644.628
P32	P32 - P33	1.57	215°22'6"	234038.578	2756647.171
P33	P33 - P34	1.14	202°23'18"	234038.096	2756648.667
P34	P34 - P35	35.71	189°24'30"	234037.357	2756649.541
P35	P35 - P36	2.41	200°10'41"	234010.145	2756672.664
P36	P36 - P37	1.49	212°26'55"	234007.878	2756673.497
P37	P37 - P38	1.59	205°21'52"	234006.425	2756673.181
P38	P38 - P39	161.18	193°5'38"	234005.169	2756672.213
P39	P39 - P40	6.38	186°49'56"	233993.145	2756547.436
P40	P40 - P41	3.79	177°39'13"	233989.726	2756542.056
P41	P41 - P42	8.24	88°3'9"	233987.366	2756538.947
P42	P42 - P43	171.34	191°45'50"	233890.965	2756544.243
P43	P43 - P44	1.34	199°39'13"	233999.920	2756679.057
P44	P44 - P45	2.35	210°41'26"	234000.710	2756679.057
P45	P45 - P46	1.66	204°48'16"	234000.453	2756680.384
P46	P46 - P47	32.84	193°44'60"	233999.478	2756681.732
P47	P47 - P48	2.69	202°33'29"	233974.469	2756703.009
P48	P48 - P49	2.69	225°6'59"	233971.972	2756703.832
P49	P49 - P50	2.15	202°38'41"	233969.526	2756702.601
P50	P50 - P51	160.95	180°0'0"	233968.144	2756700.956

Superficie: 6051.84 m²



AYUNTAMIENTO DE CULIACAN

LOCALIZACION



H. AYUNTAMIENTO DE CULIACAN

PLANO PROYECTO:
AMPLIACIÓN DE RED DE DISTRIBUCIÓN DE ENERGIA ELECTRICA , SECTOR AMPLIACION GUADALUPE EN LA LOCALIDAD EL TAMARINDO, SINDICATURA DE VILLA A. LOPEZ MATEOS, CULIACAN, SINALOA.

PRESIDENTE MUNICIPAL:

ARQ. JUAN DE DIOS GAMEZ MENDIVIL

SECRETARIA DE OBRAS Y SERVICIOS PUBLICOS:

ARQ. ARLETTE DIAZ LEON

DIRECTOR DE OBRAS PUBLICAS:

ING. RAUL CAMACHO VALDEZ

SECRETARIA DE DESARROLLO URBANO SUSTENTABLE:

ARQ. MIGUEL ANGEL AISPURO ESPINOZA

SECRETARIA DE BIENESTAR:

QFB ALINE KRISTABEL GUERRA GARCIA

FECHA:

MARZO DE 2023



AYUNTAMIENTO DE CULIACAN