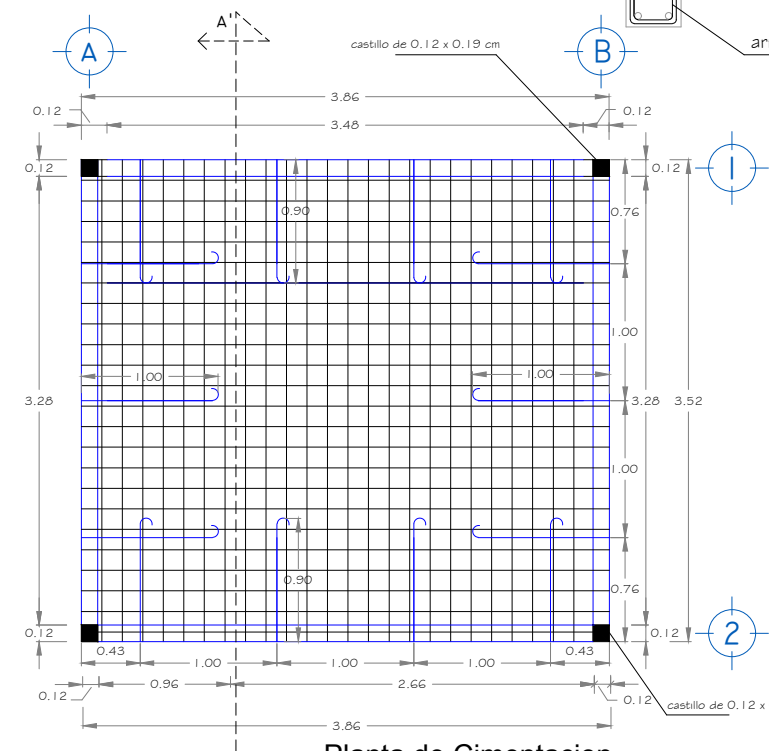
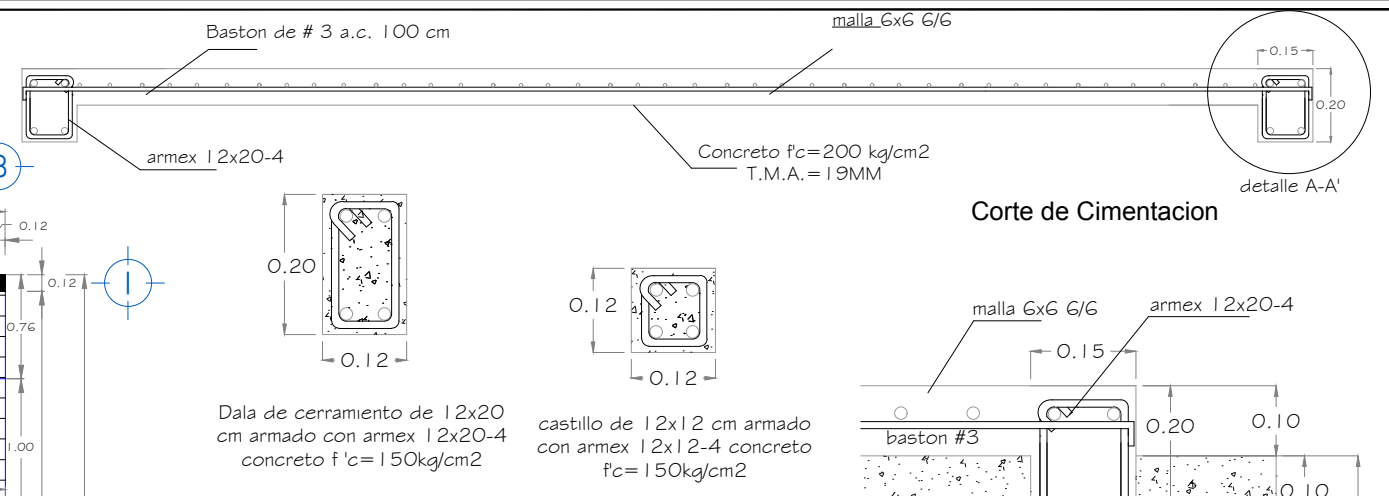


Inst. Electrica y Armado de Losa

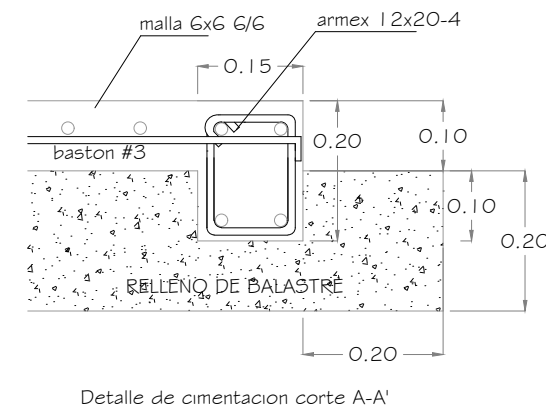


Planta de Cimentación



Corte de Cimentación

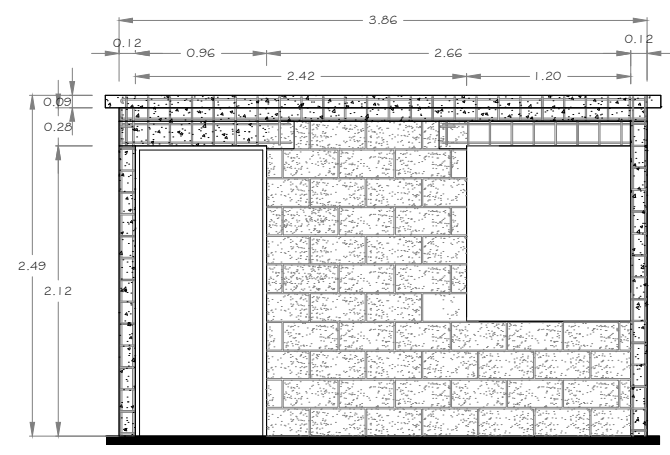
Dala de cerramiento de 12x20 cm armado con armex 12x20-4 concreto f'c=150kg/cm2  
 castillo de 12x12 cm armado con armex 12x12-4 concreto f'c=150kg/cm2



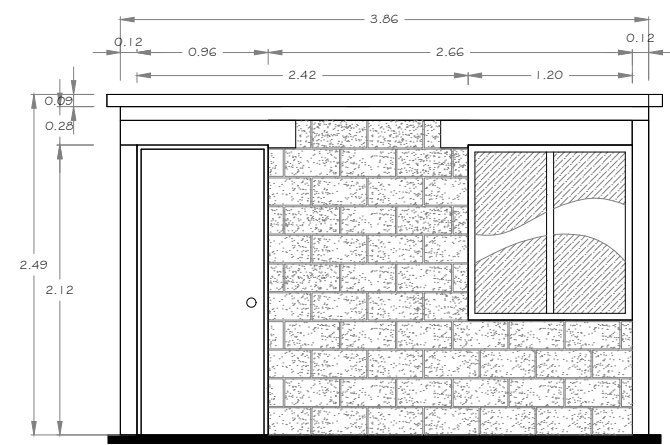
Detalle de cimentacion corte A-A'

**SIMBOLOGIA ELECTRICA**

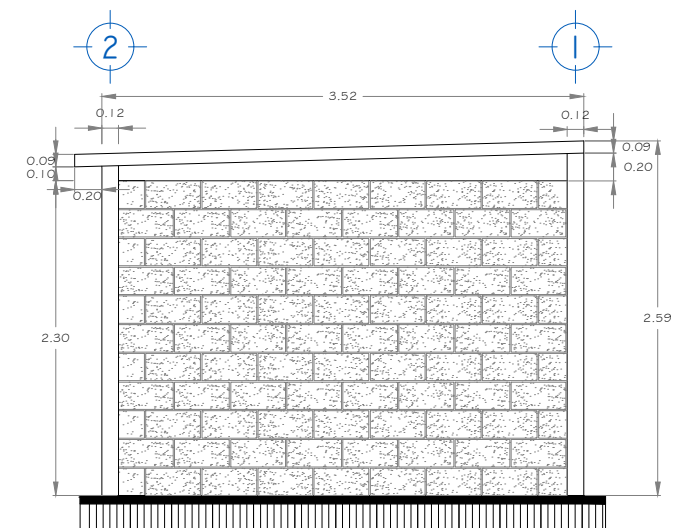
	SALIDA DE CENTRO
	APAGADOR
	CONTACTO DOBLE 110 V
	CENTRO DE CARGA



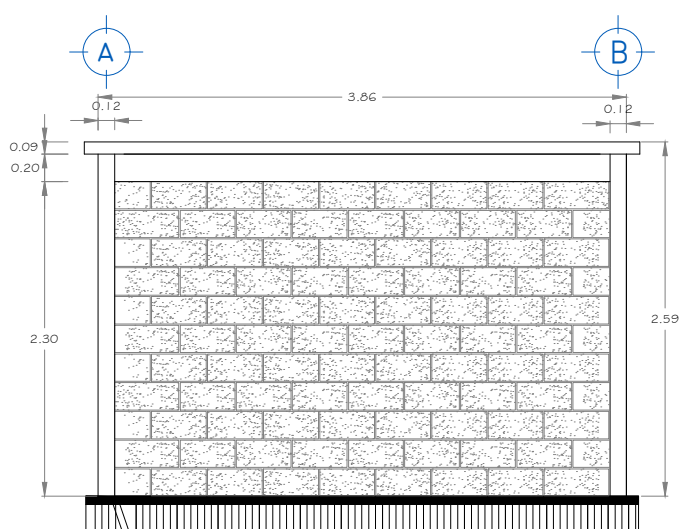
DETALLE DE ANTEPECHO SOBRE PUERTA Y VENTANA



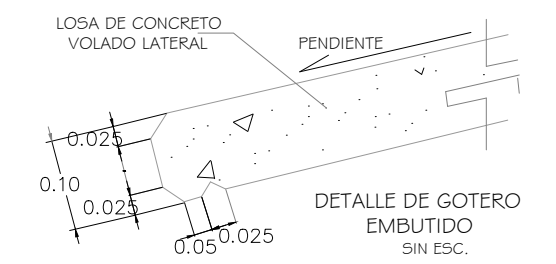
FACHADA PRINCIPAL



Alzado Lateral



Alzado posterior



DETALLE DE GOTERO EMBUTIDO SIN ESC.